

Page 1. (No. of pages :- 3)  
 MINISTRY OF SUPPLY (S.R.D.E.)

VALVE ELECTRONIC **CV6**

Specification No. MOS/CV6/4  
 Dated 25.9.45.

SECURITY  
Specification Valve  
 Restricted Restricted

→ To be read in conjunction with K1001.

→ Indicates a change

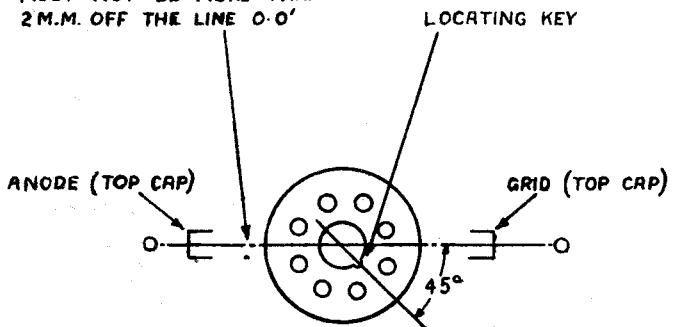
<u>TYPE OF VALVE</u> : Triode				<u>MARKING</u>	
<u>CATHODE</u> : Indirectly heated				As in K1001/4	
<u>ENVELOPE</u> : Non-metallised					
<u>COMMERCIAL PROTOTYPE</u> : M.O.V. E.1148					
<u>RATING</u>			Note	<u>BASE</u>	
				I.O. 6-Pin	
Heater Voltage	(V)	6.3		Pin	Electrode
Heater Current	(A)	0.2		1	No connection
Anode Voltage (max)	(V)	250	A	2	Heater
Anode Dissipation (max)	(W)	3.5	A	3	Pin omitted
Anode Current	(mA)	14.0	B	4	No connection
Mutual Conductance	(mA/V)	3.0	B	5	No connection
<u>CAPACITANCES</u> (pF)				6	Pin omitted
C <sub>ag</sub>		2.15		7	Heater
C <sub>ge</sub>		2.15		8	Cathode
C <sub>ae</sub>		0.8		TC1	Control Grid
				TC2	Anode
<u>NOTES</u>				<u>DIMENSIONS</u>	
A. When used as a self-oscillator under CW conditions.				See Drawing Page 3	
B. At V <sub>h</sub> = 6.3, V <sub>a</sub> = 250, V <sub>g</sub> = -5.5.					

TESTS

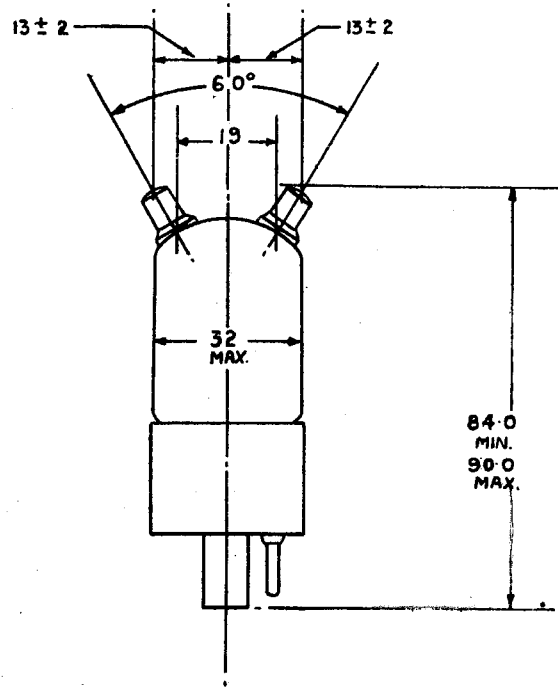
To be performed in addition to those applicable in K1001

	Test Conditions				Test	Limits		No. Tested			
						Min.	Max.				
a	See K1001/AIII				Capacitances (pF)			6 per week			
	Links to H.P.	Links to L.P.	Links to E.						(i) Cag-	-	2.5
	TC2	TC1	1,2,3,4, 5,6,7,8, 9,10.						(ii) Cae	-	1.3
	TC2	2,7,8	1,3,4,5, 6,9,10, TC1.						(iii) Cge	-	2.5
	TC1	2,7,8	1,3,4,5, 6,9,10, TC2								
b	Vh	Va	Vg	Ie	Ih (A)	0.18	0.22	100% or S			
	6.3	-	-	-							
c	6.3	250	-5.5	-	Ia (mA)	9.8	18.2	100%			
d	6.3	250	-5.5	-	gm (mA/V)	2.25	3.75	100%			
e	6.3	250	-5.5	-	Rev. Ig (μA)	-	2.0	100%			
f	6.3	Anode and grid strapped		80 mA	Voltage applied to anode and grid strapped	-	50	100%			
g	<u>H.F. Impedance Test</u>				The valve shall be tested in the approved apparatus. According to MOV/Spec. TGB154.			100%			

THE CENTRES OF THE TOP CAPS  
MUST NOT BE MORE THAN  
2 M.M. OFF THE LINE O-O'



EXTERNAL VIEW.



ALL DIMENSIONS IN MILLIMETRES