

# —Standard Valves—

4279-A  
Valve

## 4279-A VALVE

TRIODE.

### SPECIFICATION.

#### Cathode.

Thoriated Tungsten filament.  
Constant voltage type.

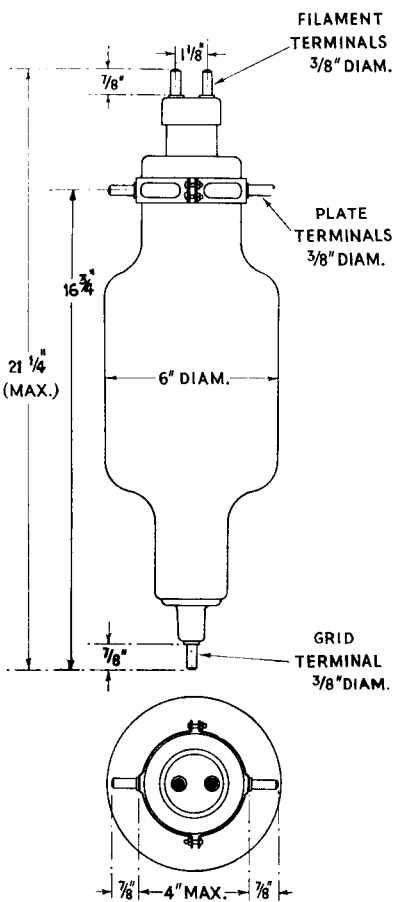
#### Dimensions.

Overall length 21  $\frac{1}{4}$ " (54 cms.)  
Maximum diameter 6" (15.2 cms.)  
Net weight 3  $\frac{1}{2}$  lbs. (1,500 gms.)

#### Constants.

Filament voltage 10 volts  
Nominal filament current 21 amps.  
Total emission 8 amps.  
\*Impedance 2,000 ohms  
\*Amplification factor 10  
Grid-anode capacity 18  $\mu\mu\text{F}$ .  
Anode-filament capacity 7  $\mu\mu\text{F}$ .  
Grid-filament capacity 15  $\mu\mu\text{F}$ .

\* at anode current of 300 mA.



### LIMITING CONDITIONS FOR SAFE OPERATION.

Maximum direct anode voltage	3,000 volts
Maximum direct anode current	0.800 amps.
Maximum anode dissipation	1,200 watts
Maximum direct grid current	100 mA.
Maximum frequency for above ratings	20 Mc.
Maximum anode voltage for frequency of 40 Mc.	1,500 volts

V.4279-A.1  
Nov. 1937

# —Standard Valves—

## TYPICAL OPERATING CONDITIONS.

	Class A A.F. Amp. and Mod.		
Direct anode voltage	2,500	2,000	volts
Grid bias	—170	—110	volts
Direct anode current	0.300	0.375	amps.
Anode dissipation	750	750	watts
Load impedance	4,500	2,000	ohms
Undistorted output	155	85	watts

	Class B A.F. Amp. and Mod. For balanced 2 valve circuit		
Direct anode voltage	2,500	2,000	volts
Grid bias	—200	—150	volts
Direct anode current per valve—zero signal	0.150	0.110	amps.
Anode current per valve—maximum signal	0.800	0.800	amps.
Anode dissipation	900	720	watts
Load resistance—anode to anode	2,800	2,240	ohms
Maximum output—2 valves	2,200	1,760	watts

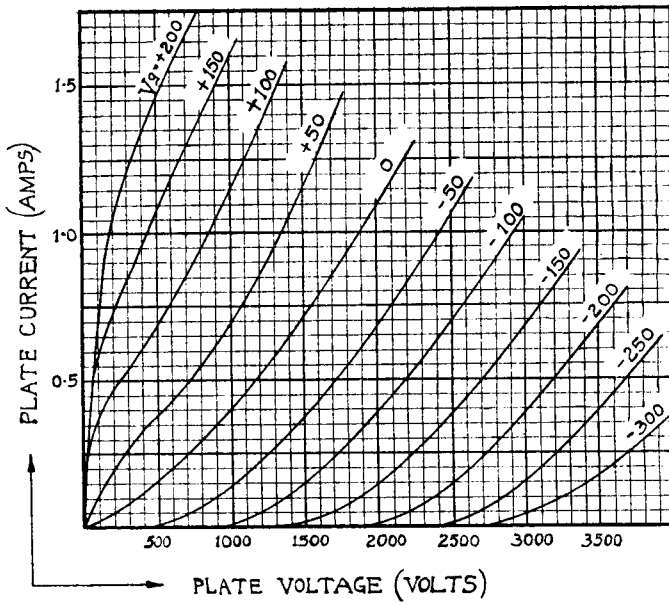
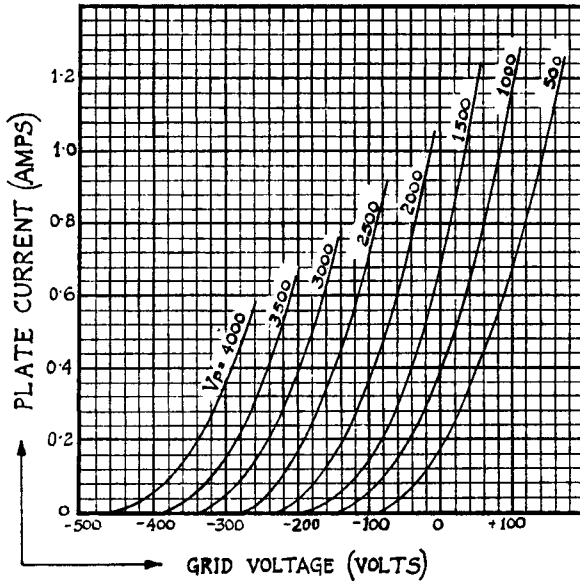
## RADIO FREQUENCY OPERATION.

	Class B Telephony		Class C Telephony		Class C Telegraphy	
	Modulated Carrier applied to grid		Subject to anode modulation		Unmodulated	
Direct anode voltage	3,000	2,500	2,250	1,750	3,000	2,500 volts
Direct anode current	0.600	0.720	0.600	0.700	0.800	0.800 amps.
Grid bias	—325	—275	—450	—360	—500 —650	—400 to —540 volts
Carrier output	600	600	900	830	1,600	1,300 watts
Anode dissipation	1,200	1,200	450	395	800	700 watts

# —Standard Valves—

4279-A  
Valve

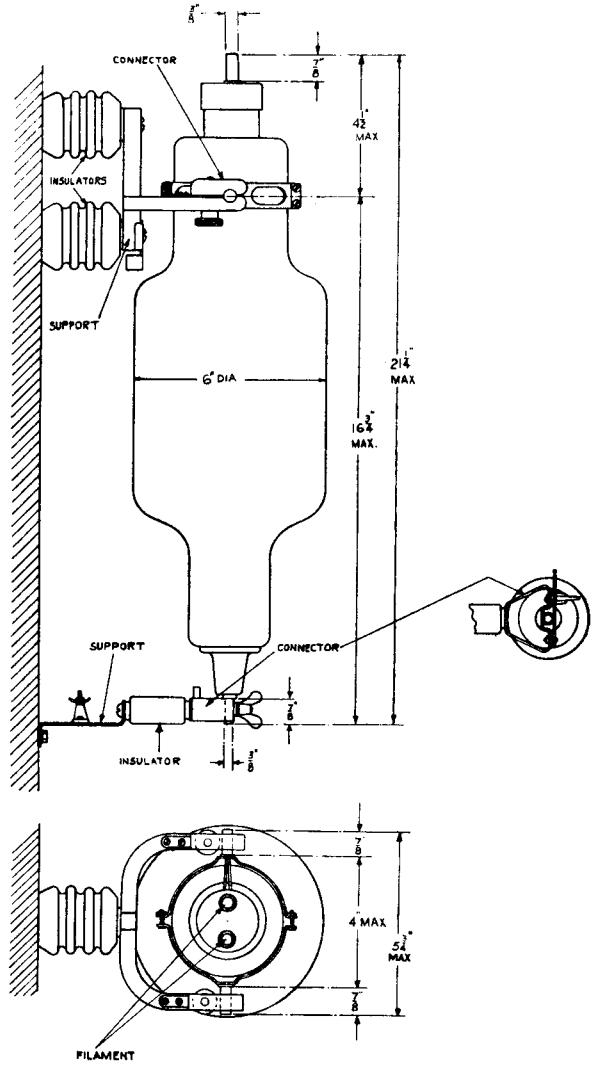
These curves are taken with A.C. filament heating, grid and anode voltages being referred to the centre point of the filament.



V.4279-A.2  
Sept. 1938.

4279-A  
Valve

# —Standard Valves—



PRINTED IN  
ENGLAND