

# —Standard Valves—

4282-B Valve  
-BZ Valve

## 4282-B, 4282-BZ VALVES

TETRODES.

SPECIFICATION.

### Cathode.

Thoriated Tungsten filament.  
Constant voltage type.

### Base.

4282-B American medium 4-pin. Anode connected to top cap.  
4282-BZ—Special 4-pin low loss. Anode connected to top cap.

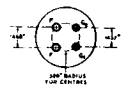
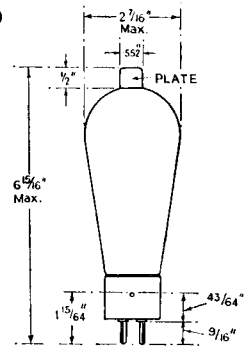
### Dimensions.

	4282-B	4282-BZ
Overall length	$6\frac{15}{16}$ " (17.7 cms.)	6" (15.2 cms.)
Maximum diameter	$2\frac{7}{16}$ " (6.2 cms.)	$2\frac{7}{16}$ " (6.2 cms.)
Net weight	0.2 lbs. (90 gms.)	0.3 lbs. (140 gms.)

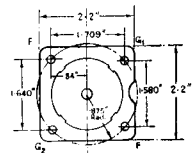
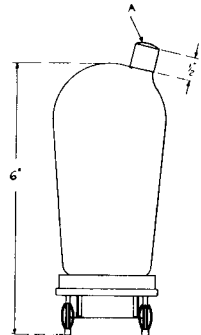
### Constants.

Filament voltage	10 volts
Nominal filament current	3 amps.
Total emission	1.25 amps.
*Impedance	70,000 ohms
*Amplification factor	100
Control grid-anode capacity	0.2 $\mu$ F.
Input capacity	12.2 $\mu$ F.
Output capacity	6.8 $\mu$ F.

\* at  $V_p = 1,000$  volts,  $V_{g_2} = 150$  volts,  
 $I_p = 70$  mA.



4282-B



4282-BZ

### LIMITING CONDITIONS FOR SAFE OPERATION.

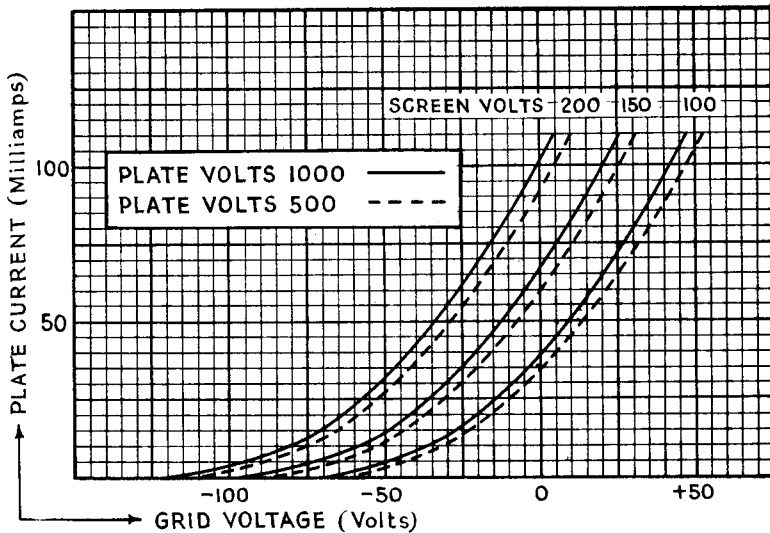
Maximum direct anode voltage	1,000 volts
Maximum direct anode current	0.100 amps.
Maximum anode dissipation	70 watts
Maximum direct grid current	0.050 amps.
Maximum screen-grid voltage	250 volts
Maximum screen-grid dissipation	5 watts
Maximum frequency for above ratings	30 Mc.
Maximum anode voltage for frequency of 60 Mc.	500 volts

V.4282-BBZ.1  
Nov. 1937

# —Standard Valves—

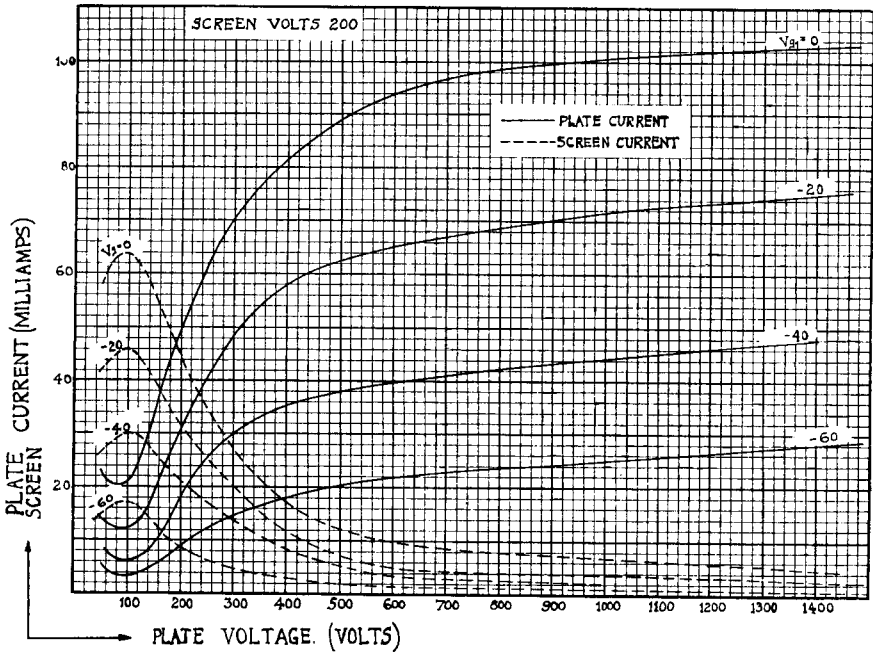
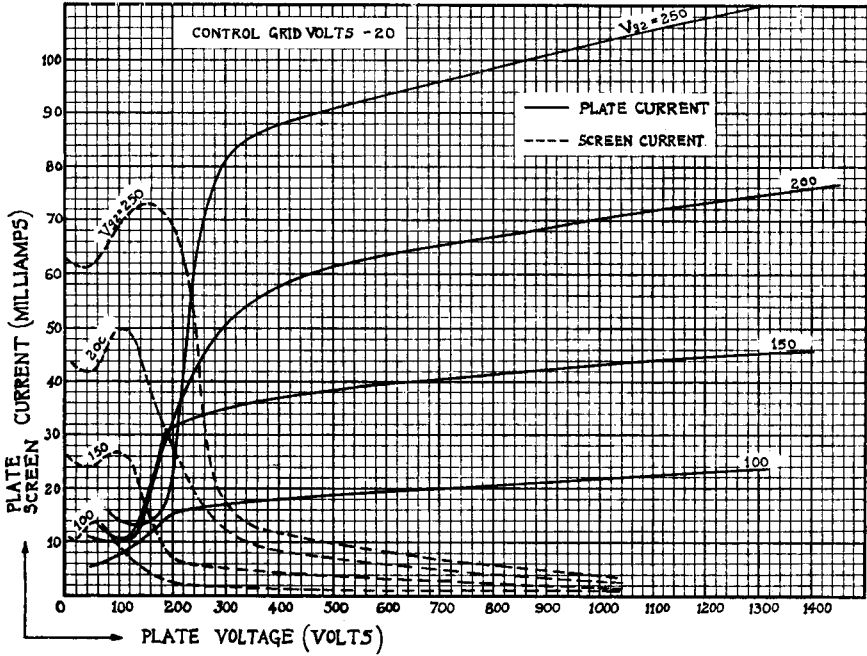
## TYPICAL OPERATING CONDITIONS. RADIO FREQUENCY OPERATION.

	Class B Telephony		Class C Telephony		Class C Telephony	
	Modulated Carrier applied to grid		Subject to anode modulation		Unmodulated	
Direct anode voltage	1,000	750	750	500	1,000	750 volts
Direct anode current	0.100	0.100	0.100	0.100	0.100	0.100 amps.
Control grid bias	-90	-90	-180	-180	-135	-135 to -180 volts
Direct screen-grid voltage	150	150	150	150	150	150 volts
Carrier output	33	25	50	33	67	50 watts
Anode dissipation	67	50	27	17	33	25 watts



# —Standard Valves—

4282-B Valve  
-BZ Valve



PRINTED IN  
ENGLAND