

Mullard OSCILLOGRAPH TUBE

E41-G4/B4

CATHODE RAY TUBE FOR OSCILLOGRAPHIC USE

4 - Inch Screen

Heater Vf = 4.0 V
If = 1.0 A

Capacities CG = 7.5 uuF
CD1D1' = 2.6 uuF
CD2D2' = 2.8 uuF

Fluorescent Colour - Green (G4) Blue (B4)

Deflection - Double electrostatic for symmetrical operation.

Operating Conditions

Va2 1,000 V
 Val (approx. for focus) 400 V
 Vg (1) 0- -40 V
 N1 0.40 mm/V
 N2 0.31 mm/V

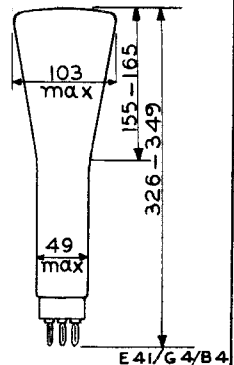
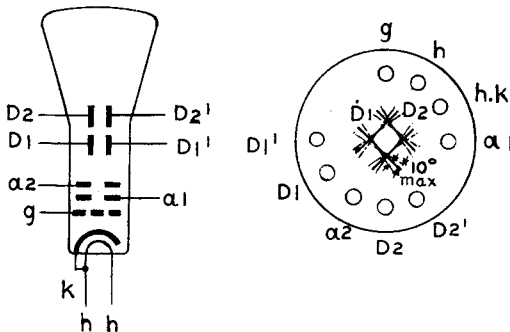
- (1) The Grid Voltage should be adjusted to give the required light intensity. The voltage should never become positive or damage to the tube will result.

Max. writing speed 0.5 km/sec

Limiting Values

Va2 max 1,200 V
 Val max 500 V

Arrangement of electrodes and base connections.



E41-G4/B4

Mullard OSCILLOGRAPH TUBE

