

# FEDERAL POWER TRIODE

## Type F-132-A

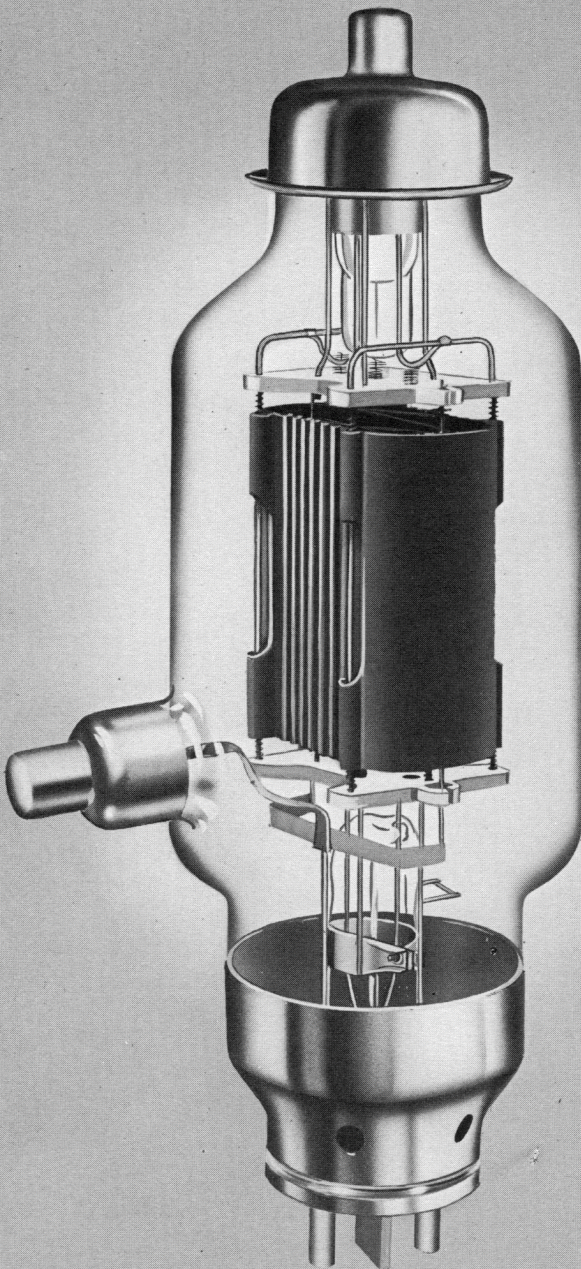
### 600 Watts Plate Dissipation



#### GENERAL DATA

#### DESCRIPTION:

Federal's F-132-A is a three electrode tube designed for use as a modulator. The anode, radiation-cooled, is capable of dissipating 600 watts. The cathode is a thoriated tungsten filament.



#### Electrical:

▶ Filament Voltage	11 Volts
▶ Filament Current	13 Amperes
▶ Amplification Factor, at $I_b = 0.200$ amps. $E_b = 3,000$ volts	10
▶ Interelectrode Capacitances	
Grid-Plate	15.0 $\mu\mu\text{f}$
Grid-Filament	12.0 $\mu\mu\text{f}$
Plate-Filament	5.5 $\mu\mu\text{f}$

#### Mechanical:

▶ Mounting Position— Vertical, Base Down	
▶ Type of Cooling—Radiation	
▶ Net Weight, approximate	2 Pounds

# FEDERAL POWER TRIODE

## Type F-132-A

### 600 Watts Plate Dissipation



In satisfying the customer and winning his confidence, Federal has reduced tube selling to a formula.

### Maximum Ratings and Typical Operating Conditions

#### AUDIO-FREQUENCY POWER AMPLIFIER—CLASS A

##### Maximum Ratings, Absolute Values

DC Plate Voltage	3,500 Volts
Plate Dissipation	600 Watts

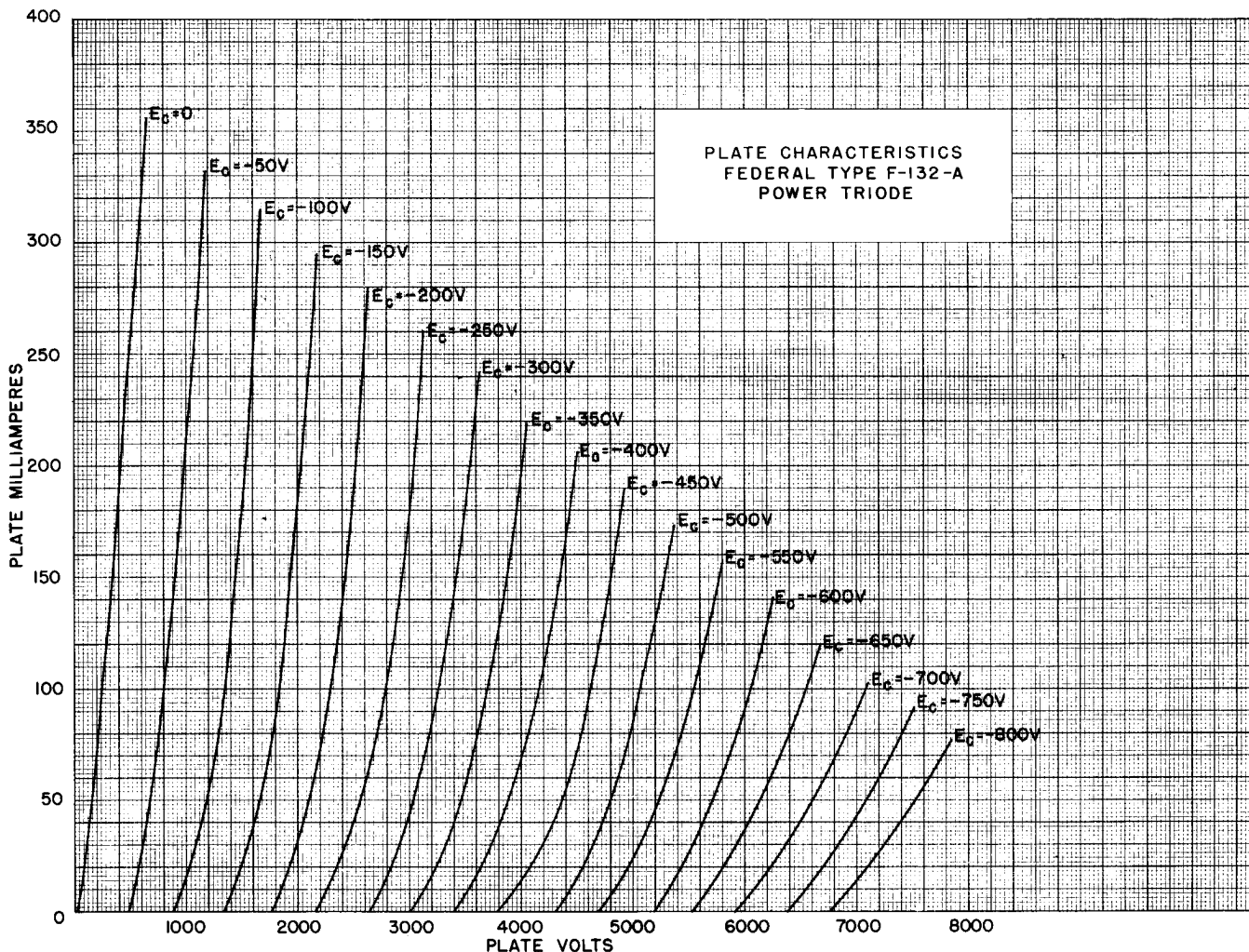
##### Typical Operation

As push-pull Class A driver for 2 Type F-125-A tubes.

(Unless otherwise specified, values are for two tubes)

DC Plate Voltage	3,500	2,700 Volts
DC Grid Voltage	-300	-225 Volts

Zero Signal Plate Current	0.308	0.300 Ampere
Maximum Signal Plate Current	0.317	0.307 Ampere
Peak Grid to Grid Signal Voltage	590	440 Volts
Peak Plate to Plate Output Voltage	5,700	4,000 Volts
Effective Plate to Plate Load Impedance	40,000	35,000 Ohms
Output Transformer turns ratio	1:1	1:1.3
Total Harmonic Distortion	2	1 Percent

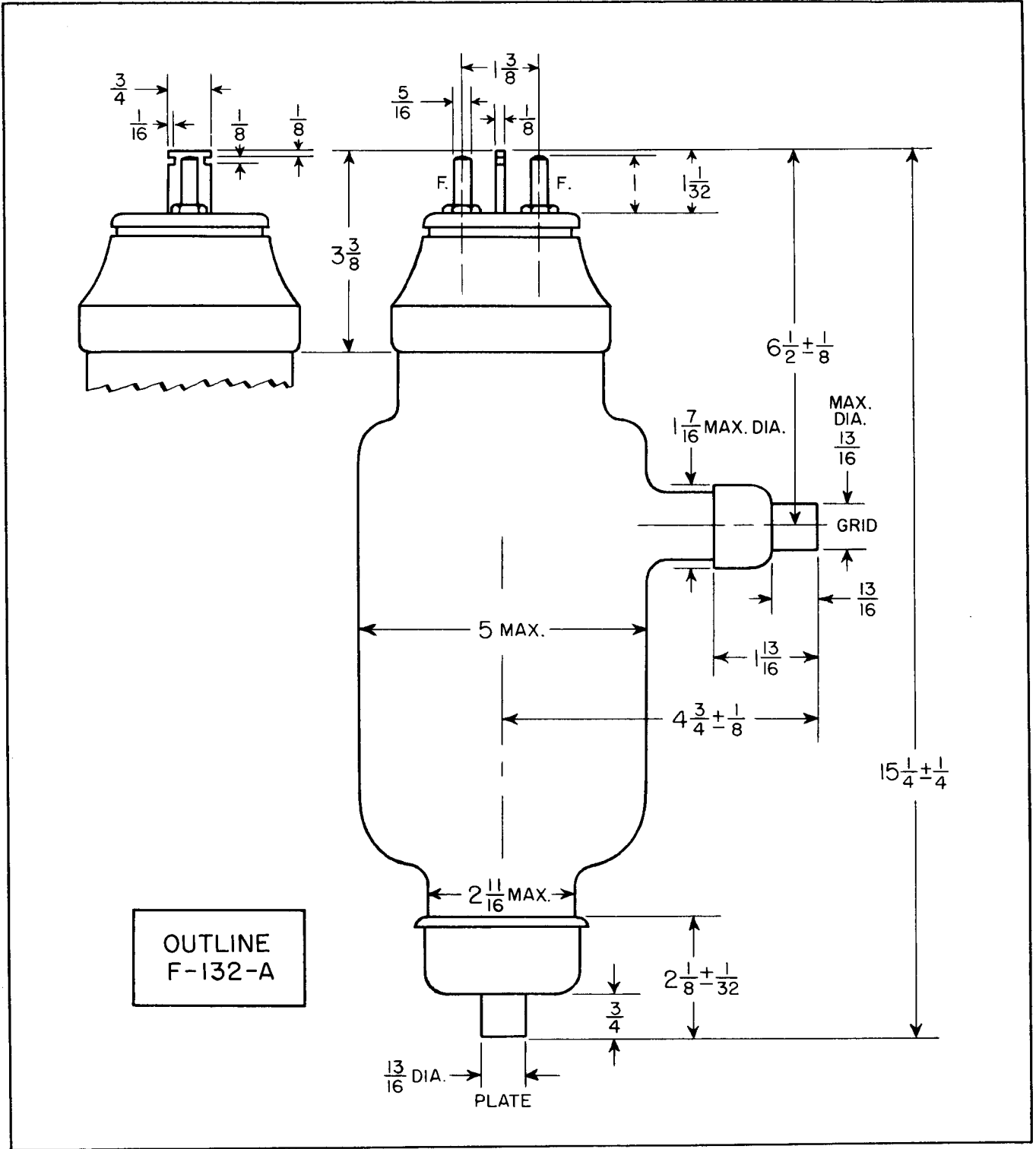


One reason why Federal tubes are trade-marked, is to show the craftsman's pride and Federal's satisfaction in work well done.

# FEDERAL POWER TRIODE

## Type F-132-A

### 600 Watts Plate Dissipation



*Federal Telephone and Radio Company*

100 Kingsland Road VACUUM TUBE DEPARTMENT Clifton, New Jersey



**Federal Always Has  
Made Better Tubes**