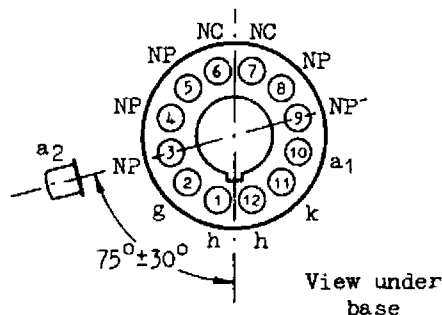
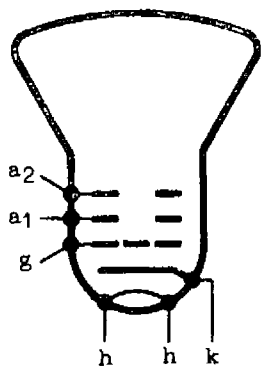


I2XP4

12" TELEVISION TUBE



BASE - B12A - Duodecal
CAP - C.T.2. (9 mm)

View under base

GENERAL DATA

Fluorescent Colour of Screen white
Focus magnetic
Deflection magnetic
Deflection Angle (for diameter of 290 mm) 60 degrees
Ion Trap magnetic
Weight (approx.) 8 $\frac{3}{4}$ lbs.
Mounting Position - Any, except vertical with screen uppermost

CATHODE DATA

Indirectly heated - series or parallel operation
Heater Voltage V_h 6.3 V
Heater Current I_h 0.3 A
Heater Voltage Switching Surge must not exceed 8.5 volts

CAPACITANCES

Grid/All other electrodes $c_{g,all}$ 6 pF
Cathode/All other electrodes $c_{k,all}$ 5 pF
Anode No.2/External coating $c_{a2,M}$ approx. 2,000 pF

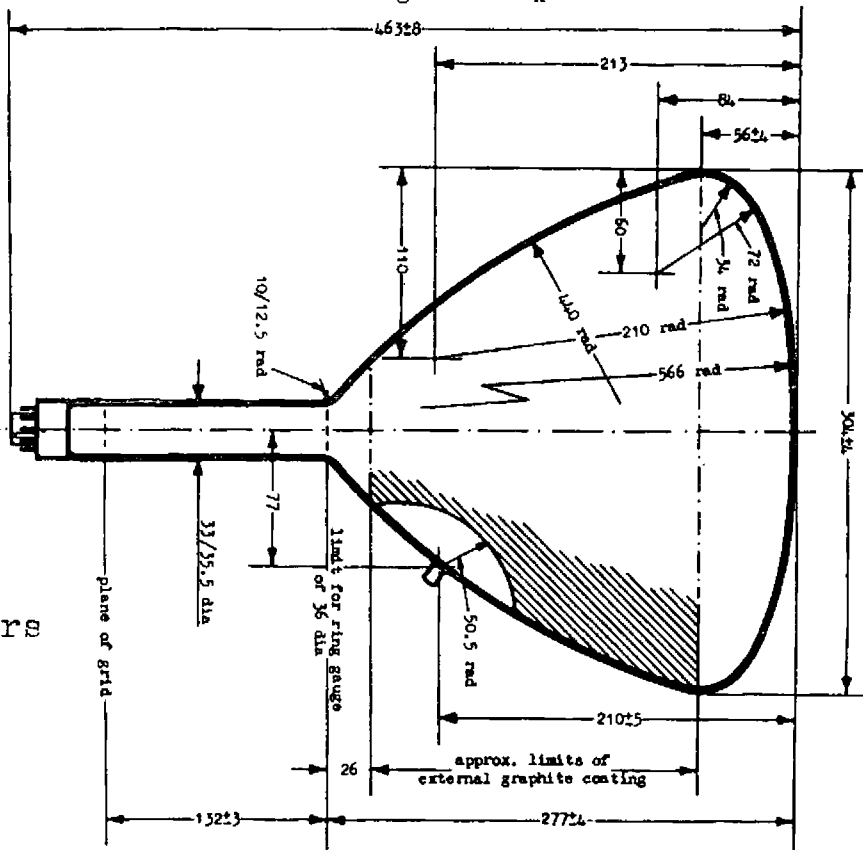
All dimensions in millimeters

RATINGS

Max. Anode No.2 Voltage	V_{a2} max.	9	KV
Max. Anode No.1 Voltage	V_{a1} max.	$0.038 \times V_{a2}$	V
Min. Grid Voltage	V_g min.	-1	V
Max. Grid Voltage (Visual cut-off)	V_g max.	$-0.24 \times V_{a1}$	V
Max. Mean Cathode Current	$I_k(av)$ max.	200	μA
Max. Peak Heater/Cathode Voltage (heater negative to cathode)	$v_{h,k(pk)}$ max.	150	V
Max. Grid Resistor	$R_{g,k}$ max.	1	M Ω

TYPICAL OPERATION

Anode No.2 Voltage	V_{a2}	8	KV
Anode No.1 Voltage	V_{a1}	250	V
Grid Drive for Peak Brightness	V_g change	30	V
Peak Brightness for 200-line Raster of size 280 x 210 mm	$B(pk)$	22	efc
Approx. Field Strength for Focus at Peak Brightness		280	Gauss
Cathode Current at Peak Brightness	I_k	200	μA



Electronic Tubes Ltd.